

# Public Document Pack



Hampshire  
County Council

## NOTICE OF MEETING

<b>Meeting</b>	Policy and Resources Select Committee
<b>Date and Time</b>	Friday, 19th November, 2021 at 10.00 am
<b>Place</b>	Mitchell Room, Ell Court, Winchester
<b>Enquiries to</b>	members.services@hants.gov.uk

Carolyn Williamson FCPFA  
Chief Executive  
The Castle, Winchester SO23 8UJ

## FILMING AND BROADCAST NOTIFICATION

This meeting may be recorded and broadcast live on the County Council's website. The meeting may also be recorded and broadcast by the press and members of the public – please see the Filming Protocol available on the County Council's website.

## AGENDA

### 1. APOLOGIES FOR ABSENCE

To receive any apologies for absence.

### 2. DECLARATIONS OF INTEREST

All Members who believe they have a Disclosable Pecuniary Interest in any matter to be considered at the meeting must declare that interest and, having regard to Part 3 Paragraph 1.5 of the County Council's Members' Code of Conduct, leave the meeting while the matter is discussed, save for exercising any right to speak in accordance with Paragraph 1.6 of the Code. Furthermore all Members with a Personal Interest in a matter being considered at the meeting should consider, having regard to Part 5, Paragraph 4 of the Code, whether such interest should be declared, and having regard to Part 5, Paragraph 5 of the Code, consider whether it is appropriate to leave the meeting while the matter is discussed, save for exercising any right to speak in accordance with the Code.

### 3. MINUTES OF PREVIOUS MEETING (Pages 3 - 6)

To confirm the minutes of the previous meeting on 24 September 2021.

### 4. DEPUTATIONS

To receive any deputations notified under Standing Order 12.

**5. CHAIRMAN'S ANNOUNCEMENTS**

To receive any announcements the Chairman may wish to make.

**6. HAMPSHIRE COMMUNITY SAFETY STRATEGY GROUP** (Pages 7 - 20)

To consider a report from the Director of Adults', Health and Care on the Hampshire Community Safety Strategy Group and to receive a joint presentation on County Lines from the Director of Children's Service and Hampshire Constabulary.

**7. CONDUCTING CONSULTATIONS AT HAMPSHIRE COUNTY COUNCIL** (Pages 21 - 40)

To receive a presentation from the Director of HR, Organisational Development and Communications and Engagement on the County Council's approach to consultation and engagement.

**8. APPROVAL OF WORKING GROUPS** (Pages 41 - 46)

To consider a report of the Chief Executive seeking approval to the setting up of two working groups for the Culture and Communities Select Committee and the Health and Adult Social Care Committee.

**9. WORK PROGRAMME** (Pages 47 - 54)

To consider the Committee's forthcoming work programme.

**ABOUT THIS AGENDA:**

**On request, this agenda can be provided in alternative versions (such as large print, Braille or audio) and in alternative languages.**

**ABOUT THIS MEETING:**

**The press and public are welcome to attend the public sessions of the meeting. If you have any particular requirements, for example if you require wheelchair access, please contact [members.services@hants.gov.uk](mailto:members.services@hants.gov.uk) for assistance.**

County Councillors attending as appointed members of this Committee or by virtue of Standing Order 18.5; or with the concurrence of the Chairman in connection with their duties as members of the Council or as a local County Councillor qualify for travelling expenses.

# Agenda Item 3

AT A MEETING of the Policy and Resources Select Committee of HAMPSHIRE COUNTY COUNCIL held at The Castle, Winchester on Friday, 24th September, 2021

Chairman:

\* Councillor Jonathan Glen

- |                               |   |
|-------------------------------|---|
| * Councillor Tom Thacker      | * Councillor Jackie Porter              |
| Councillor Graham Burgess     | * Councillor Elaine Still               |
| * Councillor Adrian Collett   | * Councillor Bill Withers Lt Col (Retd) |
| * Councillor Alex Crawford    | * Councillor Derek Mellor               |
| Councillor Tim Davies         |   |
| * Councillor Wayne Irish      |   |
| * Councillor Peter Latham     |   |
| * Councillor Rob Mocatta      |   |
| * Councillor Kirsty North     |   |
| * Councillor Stephen Philpott |   |

\*Present

Also present with the agreement of the Chairman: Councillor Steve Forster, Executive Member for Commercial Strategy, Estates and Property.

## 11. APOLOGIES FOR ABSENCE

Apologies were received from Councillor Graham Burgess and Councillor Derek Mellor attended the meeting as the Conservative substitute.

## 12. DECLARATIONS OF INTEREST

Members were mindful that where they believed they had a Disclosable pecuniary Interest in any matter considered at the meeting they must declare that interest at the time of the relevant debate and, having regard to the circumstances described in Part 3, Paragraph 1.5 of the County Council's Members' Code of Conduct, leave the meeting while the matter was discussed, save for exercising any right to speak in accordance with Paragraph 1.6 of the Code. Furthermore Members were mindful that where they believed they had a Personal Interest in a matter being considered at the meeting they considered whether such interest should be declared, and having regard to Part 5, Paragraph 5 of the Code, considered whether it was appropriate to leave the meeting whilst the matter was discussed, save for exercising any right to speak in accordance with the Code.

No declarations were made.

## 13. MINUTES OF PREVIOUS MEETING

The minutes of the last meeting were agreed and signed by the Chairman.

## 14. DEPUTATIONS

There were no deputations to this meeting.

15. **CHAIRMAN'S ANNOUNCEMENTS**

The Chairman announced that Item 6 "County Council Priorities" on the agenda was being withdrawn and would be brought back to a future meeting.

16. **COUNTY COUNCIL PRIORITIES**

This item was being deferred to a future meeting of the Committee.

17. **SAVINGS PROGRAMME TO 2023 – REVENUE SAVINGS PROPOSALS FOR CORPORATE SERVICES**

The Committee considered four reports together from Chief Officers regarding the Revenue Savings Proposals for Corporate Services, Emergency Planning, Property and Health and Safety that had been developed as part of the Savings Programme to 2023 (SP2023) Programme (Items 7 -10 respectively on the agenda).

Officers led Members through the four Savings Programme reports through the accompanying presentation.

Members heard that the last government spending review was for one year, making forward planning difficult. Forecasting indicated that government funding would not fully meet the financial pressures the County Council faced, therefore there would be a funding gap in April 2023 and the Council would need to make savings of £80 million to balance the budget. This was in addition to £45 million in savings from previous transformation programmes that were yet to be delivered. It was reported that an overarching 'balancing the budget' consultation had been undertaken in the summer of 2021 and further consultation would be undertaken on individual proposals at the appropriate time.

The Committee were made aware of the savings target for each of the four services and a breakdown was given for where proposed savings could be achieved. Members asked questions and commented on the proposals and learned that lobbying did continue with Central Government for funding. The Chairman thanked Officers for their hard work.

The Chairman put the recommendation to the vote and it was carried.

The Committee's resolutions for each report are included under the respective minute item.

RESOLVED:

The Committee supported the Recommendations being proposed to the Executive Member for Policy and Resources in section 2 of the report. (To approve the submission of the proposed savings options contained in this report and Appendix 1 to the Cabinet.)

18. **SAVINGS PROGRAMME TO 2023 - REVENUE SAVING PROPOSALS FOR EMERGENCY PLANNING**

Discussion combined under Minute number 17.

The Chairman put the recommendation to the vote and it was carried.

RESOLVED:

The Committee supported the Recommendations being proposed to the Executive Lead Member for Economy, Transport and Environment in section 2 of the report. (To approve the submission of the proposed savings options contained in this report and Appendix 1 to the Cabinet.)

19. **SAVINGS PROGRAMME TO 2023 – REVENUE SAVINGS PROPOSALS FOR PROPERTY**

Discussion combined under Minute number 17.

The Chairman put the recommendation to the vote and it was carried.

RESOLVED:

The Committee supported the Recommendations being proposed to the Executive Member for Commercial Strategy, Estates and Property in section 2 of the report. (To approve the submission of the proposed savings options contained in this report and Appendix 1 to the Cabinet.)

20. **SAVINGS PROGRAMME TO 2023 – REVENUE SAVINGS PROPOSALS FOR HEALTH AND SAFETY**

Discussion combined under Minute number 17.

The Chairman put the recommendation to the vote and it was carried.

RESOLVED:

The Committee supported the Recommendations being proposed to the Executive Member for Performance, Human Resources and Partnerships in section 2 of the report. (To approve the submission of the proposed savings options contained in this report and Appendix 1 to the Cabinet.)

21. **WORK PROGRAMME**

The Committee considered the work programme and in doing so, requested that an item be included on antisocial behaviour/County Lines for the November meeting and an update on the Gigabit Broadband Voucher scheme for its meeting in March 2022.

RESOLVED:

The Committee agreed the work programme with the inclusion of the above-mentioned items.

---

Chairman,

## HAMPSHIRE COUNTY COUNCIL

### Decision Report

<b>Decision Maker:</b>	Policy and Resources Select Committee
<b>Date:</b>	19 November 2021
<b>Title:</b>	Hampshire Community Safety Strategy Group
<b>Report From:</b>	Director of Adults' Health and Care

Contact name: Robert Ormerod

Tel: 0370 779 6752 Email: Robert.ormerod@hants.gov.uk

#### **Purpose of this Report**

1. The purpose of this report is to provide an update on the work of the Hampshire Community Safety Strategy Group.

#### **Recommendation**

2. That the Policy and Resources Committee notes the progress on the work of the Hampshire Community Safety Strategy Group (HCSSG), including the role in providing oversight and assurance of collaborative arrangements at the Hampshire county-level to address community safety priorities.

#### **Executive Summary**

3. This report seeks to provide an update on progress of the work of the Hampshire Community Safety Strategy Group in establishing priorities and overseeing arrangements for multi-agency collaboration at the county level.
4. The Select Committee will also receive a presentation by Children's Service and the Hampshire Constabulary on the county-level multi-agency working on exploitation, serious violence and drug related harm through organised crime, including how this relates to concerns regarding anti-social behaviour in local communities.

#### **Contextual information**

5. The Policy and Resources Select Committee is the designated body for overview and scrutiny of multi-agency working at the county level to address community safety priorities. At the local level, multi-agency arrangements through district and borough community safety partnerships are overseen and scrutinised by local district and borough councils. The work of the Police and Crime Commissioner is overseen by the Hampshire Police and Crime Panel.
6. An annual report on the work of the Hampshire Community Safety Strategy Group will be presented to the County Council's Cabinet in December 2021.

7. The Hampshire Community Safety Strategy Group (HCSSG) was re-established in July 2018 and meets quarterly. It is required to prepare a Community Safety Agreement based on a strategic assessment for the area which gathers evidence to inform strategic priorities relating to current and emerging risks, threats and vulnerabilities. The HCSSG oversees county-level collaborative arrangements for addressing these priorities and how the responsible authorities under community safety legislation might otherwise work together to reduce crime and disorder or combat substance misuse.

### **Membership of the Hampshire Community Safety Strategy Group (HCSSG)**

8. The HCSSG is chaired by the Director of Adults' Health and Care and is attended by the Director of Children's Services, Director of Public Health and leads from Emergency Planning, Mental Health and Substance Misuse, Safeguarding Services for Children and Adults, Trading Standards, Supporting Families and the Youth Offending Team. Senior partners attend from representing HMP Winchester, the Probation Service, Hampshire Constabulary, Hampshire Fire and Rescue Service, the Partnership of Hampshire, Southampton and Isle of Wight Clinical Commissioning Groups, the Office of the Police and Crime Commissioner, the Local Criminal Justice Board, the Civilian Military Partnership, district and borough housing services, and community safety officers from Hampshire's district and borough community safety partnerships. Lead officers from Portsmouth and Southampton attend as observers.

### **Hampshire Strategic Assessment for Community Safety and Hampshire Community Safety Agreement.**

9. The HCSSG continued to convene quarterly during 2020-21, sharing risks and opportunities for improved collaboration relating to the county-wide community safety priorities. This was against the background of developments in 2021 including revised arrangements for probation services and the election of a new Police and Crime Commissioner as well as important contemporary issues arising from the tragic murder of Sarah Everard and the Black Lives Matter Movement and, significantly, the impact of Covid-19. The pandemic, in particular, affected several important areas relating to community safety including increases in domestic abuse, violent extremism and adult and child safeguarding concerns. These impacts are set out more fully in separate reports to Cabinet
10. During 2021, the HCSSG updated the Strategic Assessment to reflect the revised Police Force Control Strategy, the Joint Strategic Needs Assessment and the Serious Violence Problem profile. A summary of the Assessment is provided at Appendix One. In line with this, the HCSSG is due to agree updated priorities at its meeting on 20 December which, thereafter, will be communicated to the Police and Crime Commissioner for Hampshire and the Isle of Wight who is currently finalising the Policing Plan. The priorities are listed below with further detail provided in Appendix Two:
  - i) **Exploitation, serious violence and drug related harm through organised crime.**



- ii) **Intimidation violence and abuse of women and girls.**
- iii) **Hate related offences and violent extremism.**
- iv) **Promoting community wellbeing and cohesion**

11. The HCSSG has also updated the **County Agreement** describing the role of the Group as to:

- Promote a shared understanding and commitment between community safety partners.
- Provide an overview and support collaborative arrangements to address the strategic priorities.
- Provide a forum across key partnership activities for sharing strategic risks and mitigations with key areas of focus for county-wide collaboration to reduce harm.
- Have due regard to wider partnership governance.
- Provide assurance of effective collaboration to the County Council's Executive and the statutory Crime and Disorder Overview Committee for the county area (Policy and Resources Select Committee).
- Share the strategic priorities with local partnerships and the Police and Crime Commissioner.

12. Co-sponsors have been agreed for each priority who will be responsible for reporting, shared risk, mitigations and related governance developments.

13. The HCSSG identified several **key areas of focus** for continual development which should underpin county-wide collaboration around the priorities and form part of the quarterly reporting and assurance framework. These have emerged through the process of shared risk management and progress reports over the past two years and are as follows:

- Continue the development of systems approaches to timely interventions.
- Take a holistic approach to offending risk factors and rehabilitative pathways (accommodation, attitudes, thinking and behaviour, Children and family, drugs and alcohol, education, training and employment, finance, benefit and debt, health).
- Continue to embed trauma informed approaches to interventions.
- Capitalise on revised rehabilitation and offender arrangements to reducing re-offending.
- Ensure services provide effective transition into adulthood.
- Continue to develop joint intelligence and protective arrangements to combat serious and organised crime.
- Build capability and capacity to deal with on-line threats.
- Create strong shared messaging that agencies are working together to pursue justice and protect vulnerable people.

- Develop shared insight of the experience of people with protected characteristics beyond the reporting of hate crimes.
  - Further align resources and develop knowledge-based commissioning arrangements to optimise the impact of collective investment.
14. The HCSSG draws together partners across a large and complex collaborative governance structure at the county level to help deliver against the strategic priorities including:
- Hampshire Serious and organised Crime Partnership
  - Hampshire Domestic Abuse Forum
  - Hampshire Violence Reduction Unit
  - Hampshire Drug and Alcohol Partnership
  - Hampshire Trauma Informed Practice Group
  - Hampshire Childrens and Adults Safeguarding Boards
  - Hampshire PREVENT Partnership Board
  - Hampshire Childrens Trust
  - Hampshire Health and Wellbeing Board
  - Hampshire and Isle of Wight Community Safety Partnerships
  - Hampshire Modern Day Slavery Partnership
  - Hampshire Sexual Violence Partnership
  - Local Criminal Justice Board
  - Hampshire and Isle of Wight Integrated Care System

### **Climate Change Impact Assessment**

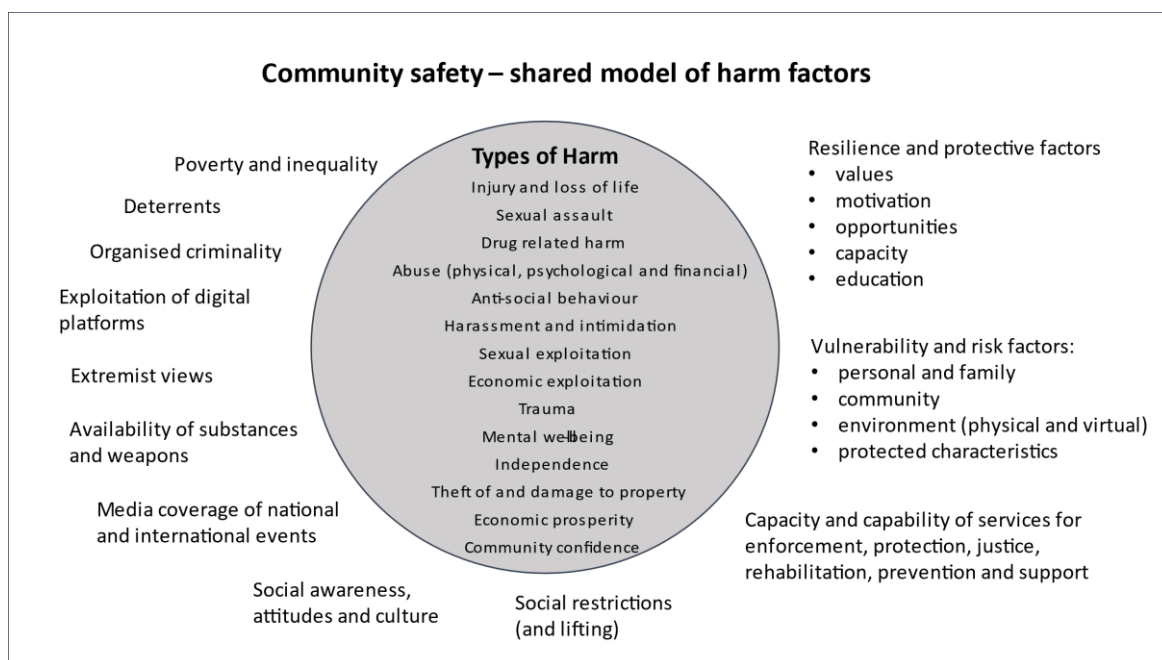
15. Hampshire County Council utilises two decision-making tools to assess the carbon emissions and resilience impacts of its projects and decisions. These tools provide a clear, robust, and transparent way of assessing how projects, policies and initiatives contribute towards the County Council's climate change targets of being carbon neutral and resilient to the impacts of a 2°C temperature rise by 2050. This process ensures that climate change considerations are built into everything the Authority does.
16. This is an annual report providing an update on the work of the Hampshire Community Safety Strategy Group, so therefore no Climate Change assessment has been undertaken.

### **Conclusion**

17. This report demonstrates positive progress in the work of the Hampshire Community Safety Strategy Group, especially in providing assurance around collaborative activities throughout, and emerging from, the Covid-19 pandemic. It has set a sound, evidence-based set of priorities and an assurance framework for effective collaboration for the next two years.



## Appendix One - Summary strategic assessment update 2021-23



### Domestic Abuse

Domestic Abuse incidents and recorded crimes have continued their upward trend, mostly in Violence without Injury crime types.

- COVID-19 lockdown measures exacerbated domestic related violence and harm, the longer-term effects of which are yet unknown. Child to parent violence and abuse (CPVA) is believed to have intensified in lockdown, with parents less inclined to report violence and abuse from their own children until behaviour escalates to a dangerous point.
- There is a continued increase in stalking and harassment. Stalking clinics and training are likely to be improving recognition of offences. Only four Stalking Prevention Orders (SPOs) have been issued. Analysis of the risk from stalking and harassment is necessary to better understand demand.

### Drug Related (Community) Harm

- Class A drugs and the supply mechanisms around them remain the highest risk compared to lower classes and new psychoactive drugs.
- Organised Crime Groups (OCGs) continue to primarily supply the powder cocaine market, with County and Local Drug Networks (LDNs) driving the heroin and crack markets.
- OCGs, middle market and/or importation activities cause little Drug Related Violence (DRV) in comparison to street-level dealing. DRV and Drug Related Harm (DRH) are most commonly linked to the activities of County Lines (CLs) and LDNs, however gaps in relation to the identification and recording of drug networks impacts accurate assessments of threat, risk and demand.

- Any impact Covid-19 had on Class A supply chains appears to have been temporary. The level and types of exploitation exhibited by CLs and LDNs has increased, with lockdowns appearing to have enhanced grooming capabilities with young people exploited to commit serious offending and perpetuate the exploitation cycle.
- A pursue only approach to CLs and LDNs has had limited impact on the drugs market. Lines are quick to re-establish - the longer they are active within an area, the more established, higher risk, and exploitative they become. Innovative partnership approaches linking targeted enforcement and safeguarding of vulnerable children need to be maintained and further developed to reduce threat levels and increase community confidence.

### **Serious Violence and Knife Crime**

- Most Serious Violence (MSV) recorded within the force area decreased by 13% when compared to the previous year. Simultaneously domestic related MSV increased by 12%.
- There were 15 homicides (four knife-enabled) during 2020 in four categories: drug-related harm, serious violence, domestic abuse or child abuse. Victim and suspect profiles are different for each.
- There has been an increase in weapons and an on-going presence of street level drug related violence.
- Even with the suppression of the night-time economy during lockdown, MSV was concentrated within the urban areas, particularly Southampton and Portsmouth city centres, on weekend evenings. Violence is likely to rise following of the lifting of lockdown measures.
- Youth on youth violence, both victim and offender under 25 years of age, accounted for 20% of all MSV
- Hampshire's Violence Reduction Unit (VRU), led centrally by the OPCC, is undertaking further analysis for a cohort of 342 knife crime offenders aged under 25 when they committed their offence, or offended against a victim who was under 25. This should provide essential insight for the development of partnership approaches to preventing serious violence.

### **Child Abuse**

- Child protection contacts and referrals to children's social care have increased during the pandemic although there has been a slight reduction in police recorded child abuse cases. Grooming offences increased by 83%.
- As crime volumes fell during the first lockdown, the proportion of repeat victims rose sharply.
- Cruelty/Neglect accounts for around 30% of all Child Abuse and is likely to increase as COVID restrictions are relaxed.

## **Children at Risk of Criminal and Sexual Exploitation**

- Children flagged at risk of CCE have increased from 126 in 19/20 to 347 in 20/21.
- Inaccurate or inconsistent recording of CSE crimes presents a challenge to accurate understanding and identification of opportunities for early intervention.

## **Sexual harassment and Serious sexual offences**

- Hampshire remains consistently high in terms of recorded serious sexual offences amongst comparable police force areas.
- Sexual offences reported in 2020-21 reduced by 6% compared to 2019-20; Rape offences fell by 5%.
- Lockdown restrictions and the limited night-time economy in 2020-21 is reflected in a 17% increase in domestic rapes in contrast to a 50% reduction in 'stranger' rapes and reported acquaintance rapes falling by a third.
- The most significant risk with the return of the night-time economy is the increase in stranger offences. Pre Covid-19 issues of lone predatory males, identified as an issue in multiple districts, are likely to return.
- Non-recent offences have consistently accounted for 25-28% of sexual offences since 2017-18.
- A recent rapid review by OFSTED highlighted a high prevalence and a degree of normalisation of sexual harassment experienced by girls both at school and in unsupervised spaces. A body of work is progressing to encourage discussion and reporting of experiences of women in different aspects of their lives.

## **Serious and Organised Crime (SOC)**

- There are 168 active Organised Crime Groups (OCGs) across the South East region, including 47 that are "owned" by Hampshire Constabulary. All forces in the South East region recorded an increase in the number of OCGs mapped in 2020/21. Hampshire mapped 10 new OCGs between April 2020 and March 2021
- OCGs continue to modify their communication methods despite the takedown of Enchrochat.
- Modern day slavery and human trafficking crimes have continued to increase at a reduced rate. Following the rise (+54) in 2019, there was an increase of (+25) in 2020. The profile of Modern Slavery Victims remains unchanged.
- Over 75% are male and over 50% are British including victims of child criminal exploitation, adult criminal exploitation and sexual exploitation. National reporting suggests that the pandemic has served to increase the

risk towards sex workers. Despite the volume of intelligence, further work is required to understand sex working, in particular via adult websites.

- Firearms discharges remain low; however, analysis of intelligence, offences, incidents and discharges indicate that the availability and accessibility of firearms has increased and these are largely linked to drugs related organised criminal activity.

## **Appendix Two: Proposed community safety strategic priorities**

### **Priority 1: Exploitation, serious violence and drug related harm through organised crime.**

This priority encompasses county-wide activity addressing:

- intelligence-led disruption of organised criminal organisations and networks
- vulnerabilities to exploitation (including on-line) especially related to county lines
- support for victims of exploitation
- the impact of organised criminal activity on perceptions of antisocial behaviour in local communities
- interventions for substance and alcohol misuse
- rehabilitation and offender management
- positive pathways away from criminal involvement
- drivers of weapon carrying and resilience of young people

### **Priority 2: Intimidation violence and abuse of women and girls.**

This priority includes county-wide activity aimed at:

- addressing the cultural and societal drivers of attitudes towards women and girls from a young age
- Shaping policies in schools and workplaces
- interventions for domestic abuse victims, families and perpetrators,
- tackling alcohol abuse
- safe public spaces
- stalking
- on-line abuse and safe use of the internet
- a balanced focus on addressing the attitudes and actions of males to ensure women and girls are empowered and not subject to intimidation, violence or micro-aggression
- a better understanding and shared appreciation of lived experience of women and girls
- justice and support services for victims of sexual violence

### **Priority 3: Hate related offences and violent extremism**



This priority encompasses activity across the county to:

- promote good community relations, cultural understanding and respect in all settings
- protect the public from acts of extreme violence
- managing risk to prevent radicalisation in key settings (including online)
- de-radicalisation interventions
- encouraging reporting of hate crimes
- a better understanding and shared experience of lived experience of people who are subject to hate crime and offensive behaviours

#### **Priority 4: Promoting community wellbeing and cohesion**

This priority encompasses activity across the county to:

- create positive activities, environments and opportunities to support wellbeing
- encourage caring communities, inclusion, voluntary and mutual support
- promote opportunities for personal and community development, resilience and prosperity
- build civic pride in Hampshire and local communities
- celebrate diversity and mutual understanding
- build on the positive community capacity legacy opportunities arising from the pandemic

**REQUIRED CORPORATE AND LEGAL INFORMATION:**

**Links to the Strategic Plan**

<b>Hampshire maintains strong and sustainable economic growth and prosperity:</b>	yes
<b>People in Hampshire live safe, healthy and independent lives:</b>	yes
<b>People in Hampshire enjoy a rich and diverse environment:</b>	yes
<b>People in Hampshire enjoy being part of strong, inclusive communities:</b>	yes

<b>Section 100 D - Local Government Act 1972 - background documents</b>	
<p>The following documents discuss facts or matters on which this report, or an important part of it, is based and have been relied upon to a material extent in the preparation of this report. (NB: the list excludes published works and any documents which disclose exempt or confidential information as defined in the Act.)</p>	
<u>Document</u>	<u>Location</u>
Document Location	
Hampshire Community Safety Strategic Assessment	
Hampshire Community Safety Agreement	

## **EQUALITIES IMPACT ASSESSMENT:**

### **1. Equality Duty**

The County Council has a duty under Section 149 of the Equality Act 2010 ('the Act') to have due regard in the exercise of its functions to the need to:

- Eliminate discrimination, harassment and victimisation and any other conduct prohibited by or under the Act with regard to the protected characteristics as set out in section 4 of the Act (age, disability, gender reassignment, marriage and civil partnership, pregnancy and maternity, race, religion or belief, sex and sexual orientation);
- Advance equality of opportunity between persons who share a relevant protected characteristic within section 149(7) of the Act (age, disability, gender reassignment, pregnancy and maternity, race, religion or belief, sex and sexual orientation) and those who do not share it;
- Foster good relations between persons who share a relevant protected characteristic within section 149(7) of the Act (see above) and persons who do not share it.

Due regard in this context involves having due regard in particular to:

- The need to remove or minimise disadvantages suffered by persons sharing a relevant protected characteristic that are connected to that characteristic;
- Take steps to meet the needs of persons sharing a relevant protected characteristic that are different from the needs of persons who do not share it;
- Encourage persons sharing a relevant protected characteristic to participate in public life or in any other activity in which participation by such persons is disproportionately low.

### **2. Equalities Impact Assessment:**

No adverse impacts

This page is intentionally left blank

## HAMPSHIRE COUNTY COUNCIL

### Cover Report

<b>Decision Maker:</b>	Policy and Resources Select Committee
<b>Date:</b>	19 November 2021
<b>Title:</b>	Conducting Consultations at Hampshire County Council
<b>Report From:</b>	Head of Insight and Engagement

**Contact name:** Katharine Hughes, Head of Insight and Engagement

**Tel:** 0370 779 2041

**Email:** katharine.hughes@hants.gov.uk

#### **Purpose of this Report**

1. The purpose of this presentation is to outline key elements of the County Council's approach to consultation. This includes reference to the legal and policy framework for consultation and practical examples of how these are applied.

#### **Recommendation(s)**

2. It is recommended that Policy and Resources Select Committee note the contents of the presentation

#### **Contextual information**

3. This presentation has been developed in response to a request by the Policy and Resources Select Committee in June 2021 to review corporate guidance on consultations as part of its ongoing Work Programme.

This page is intentionally left blank

# Conducting Consultations at Hampshire County Council

*Presentation to Policy and Resources Select Committee November 2021*

# Objective of consulting: To improve proposals by understanding the views of stakeholders\*

*\*The term 'stakeholders is used in its broadest sense, to encompass all those who could be interested or affected. This includes, but is not limited to, service users, residents, businesses, organisations, partner agencies*





# What is consultation?

---


The term 'consultation' is often used to refer to a whole range of contacts between the County Council and the population it serves. In fact, consultation is only one element within the wider field of 'engagement' – differentiated by the legal framework that surrounds it.

As a council, we are required to consult when:

- we are **taking away** a service;
- we plan to **substantially change or reduce** a service;
- there is a **legitimate expectation** that we will consult because:
  - people may be disadvantaged by the proposals;
  - the Council has previously consulted on similar proposals.

If someone wishes to challenge a decision made by the County Council it is usually easier to bring a legal challenge on the basis that:

- there has been **no consultation** where there should have been;
- that the consultation that did take place was **flawed**.



Consultation is the dynamic process of dialogue between individuals or groups, based on a genuine exchange of views and with the objective of influencing decisions, policies or programmes of action



# Legal and policy context for consultation

---

There are a range of laws that dictate the circumstances in which a consultation should take place, but the key articles that dictate **how** it should be done are the [Gunning Principles](#)

These form the legal foundation from which the legitimacy of public consultations is assessed, ensuring that

- Page 26
- proposals are still at a formative stage
  - there is sufficient information to give 'intelligent consideration'
  - there is adequate time for consideration and response
  - 'conscientious consideration' must be given to the consultation responses before a decision is made

The Gunning Principles are frequently referred to as a legal basis for judicial review decisions.

Hampshire County Council's [Consultation Policy](#) reflects the Gunning Principles and maintains the need to:

1. consult on key issues and proposals;
2. consult in good time;
3. be inclusive but within clear and appropriate limits;
4. consult using clear, simple information;
5. ensure responses are taken into account when decisions are made.

*Adopted February 2015*

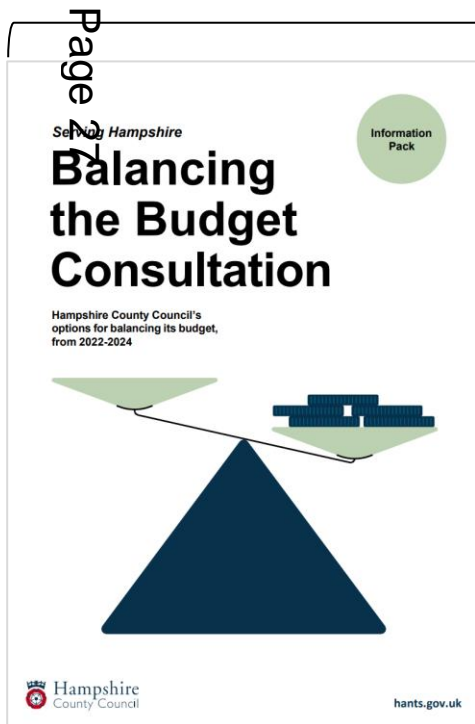
# Principle One: We will consult on key issues and proposals

Where it is proportionate to do so, the County Council will consult on significant decisions:

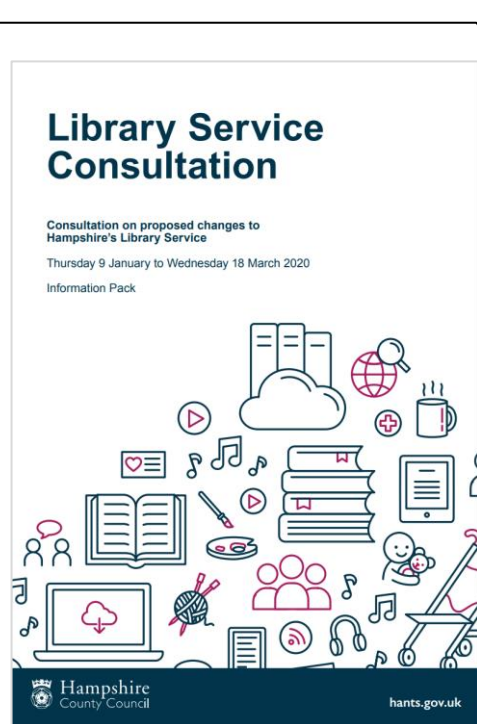
- which are likely to have an impact of significance on a particular group of service users, residents or businesses
- where there is or is likely to be widespread public interest
- where we are required by law to conduct a prescribed form of public consultation or engagement.

For example:

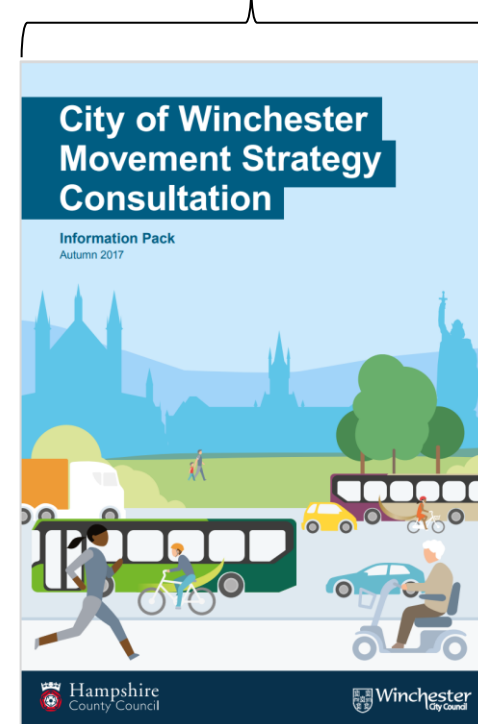
Financial strategy and savings programmes



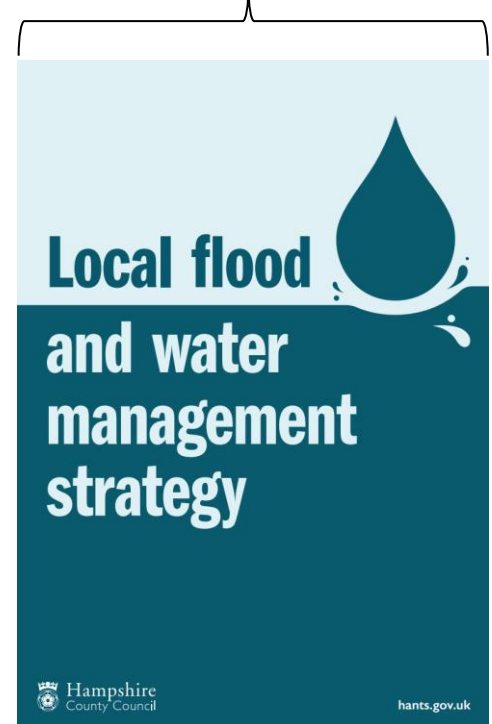
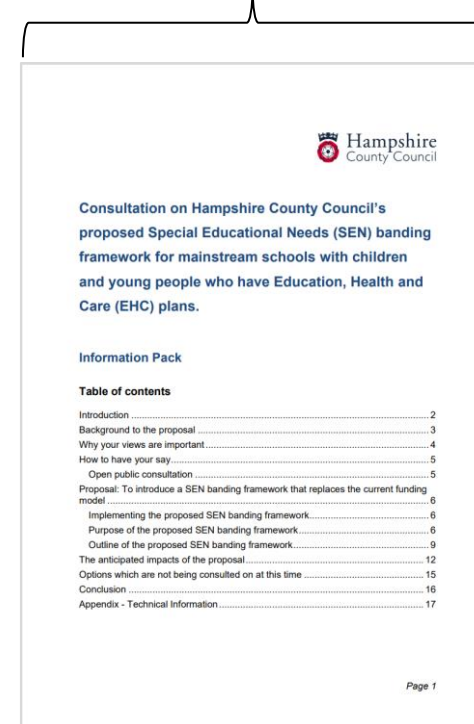
Strategic policies



Service change



Prescribed



## Principle Two: We will consult in good time

---

We endeavour to undertake consultation early in the process when proposals are still at a **formative stage**.

The timing should allow **adequate time for consideration and response** before decisions are made.

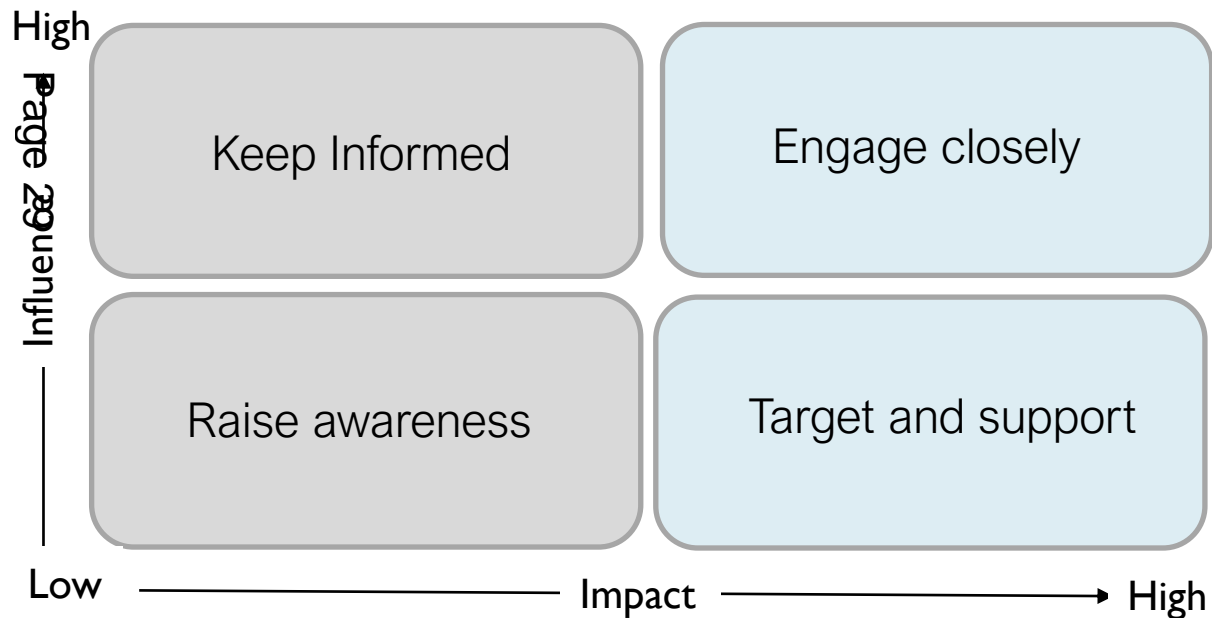


There is no fixed timescale for a consultation, but ultimately this should be governed by the needs of potential respondents, rather than the needs of the organisation.

## Principle Three: We will be inclusive, but within clear and appropriate limits

In order to **determine timelines, methodologies and analysis**, we need to understand who is likely to be a) impacted by and b) have a genuine interest in these proposals and any barriers to consulting with them.

A **stakeholder analysis** is scoped at an early stage and referred to throughout the process.



## Principle Three: We will be inclusive, but within clear and appropriate limits

---

Not everyone will want to get involved in a consultation, but we can encourage involvement by raising awareness of the opportunity and the reasons why it is important for residents and stakeholders to have their say.

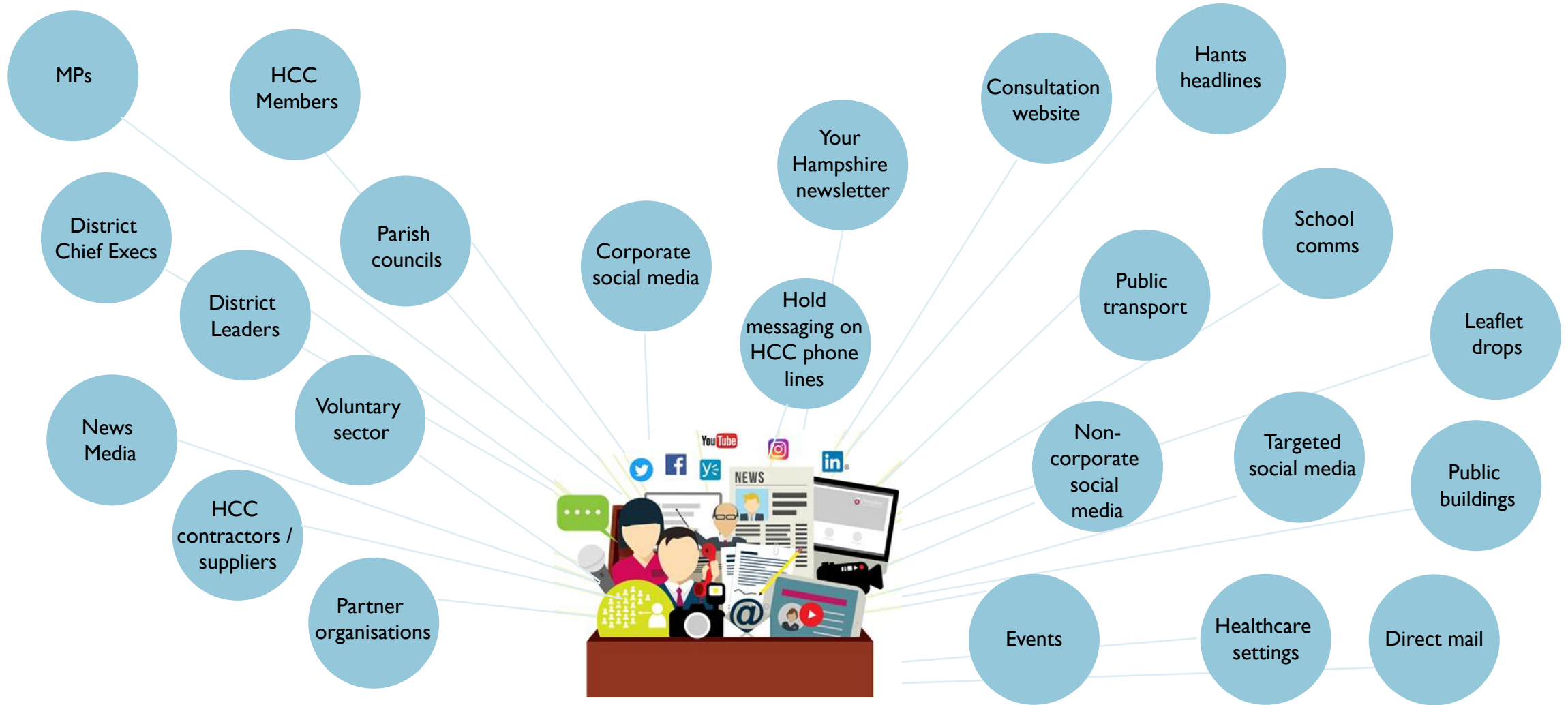
To this end:

- Each consultation is supported by a **comprehensive communications plan**
- We provide **alternative formats** in accordance with the findings of the stakeholder analysis, and offer other formats and languages on request
- We **inform people** about how their responses will be used and **publish results and actions arising** from the views shared
- We monitor how and where people became aware of our consultations, and who is responding over time, to **identify common patterns and areas for improvement**

Importantly, we need to **be proportionate in our approach** and demonstrate how feedback has been used.

# Case study: A comprehensive Communications Plan helps to maximise reach via a range of channels

Page 31



# Case study: The role of elected members in consultation

---

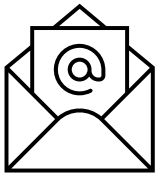
We know that many people respond to consultations when informed about them via word of mouth from a trusted individual.

Aside from their key role in decision-making, Elected Members will be aware of how to promote effectively within their communities and can play an important role in encouraging response.

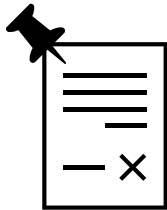


Share on social media

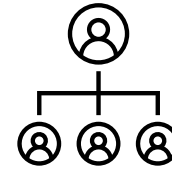
Page 32



Email your contacts – and ask them to spread the message too



Display information within your community



**Improve** the County Council's reach into seldom heard communities through understanding of local gatekeepers, facilities and community groups



**Help** your constituents to understand the importance of sharing their views



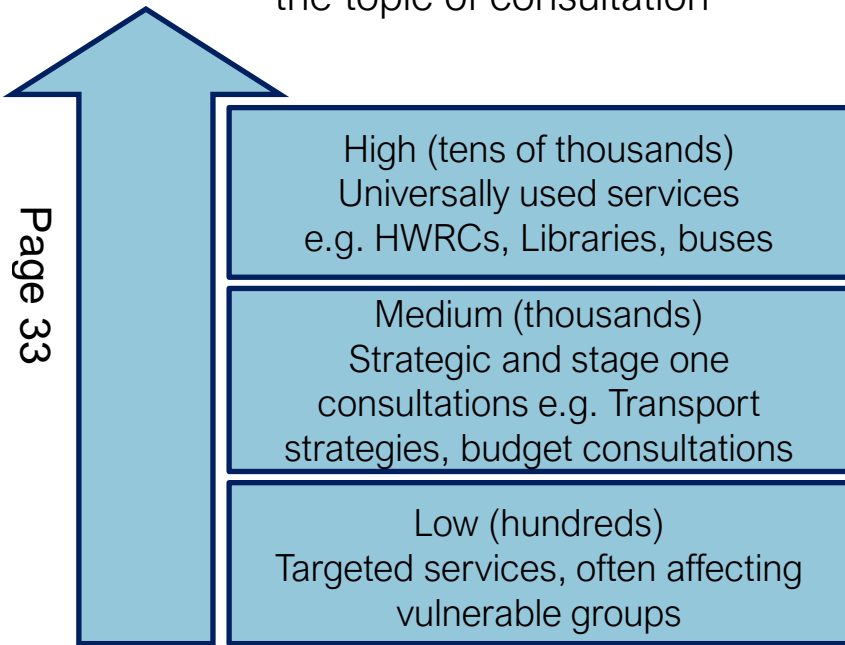
# Case study: Identifying common patterns and areas for improvement

Older people are online, just not necessarily on social media.

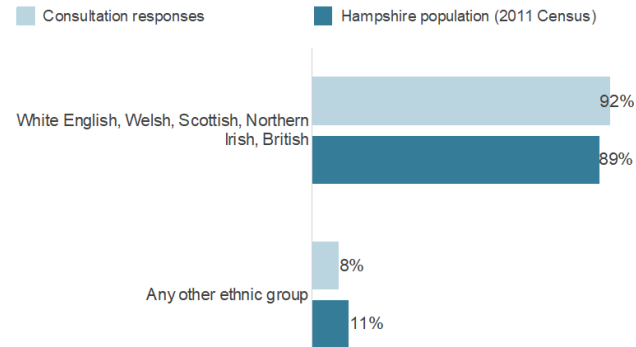
	Average	social media		Online		Via an email or letter		Consultation poster		Resident's newsletter						
		Base	%	Difference	Count	%	Difference	Count	%	Difference	Count	%	Difference			
<b>Total</b>		<b>4378</b>	<b>55.30%</b>		<b>250</b>	<b>5.70%</b>		<b>658</b>	<b>15.00%</b>		<b>78</b>	<b>1.80%</b>		<b>97</b>	<b>2.20%</b>	
What is your age?	Under 16	6	33.30%	-22.00%	0	0.00%	-5.70%	3	50.00%	35.00%	1	16.70%	14.90%	0	0.00%	-2.20%
	16 to 24	147	78.20%	22.90%	4	2.70%	-3.00%	7	4.80%	-10.20%	0	0.00%	-1.80%	0	0.00%	-2.20%
	25 to 34	517	71.80%	16.50%	23	4.40%	-1.30%	19	3.70%	-11.30%	4	0.80%	-1.00%	5	1.00%	-1.20%
	35 to 44	767	63.40%	8.10%	36	4.70%	-1.00%	95	12.40%	-2.60%	9	1.20%	-0.60%	11	1.40%	-0.80%
	45 to 54	900	60.30%	5.00%	55	6.10%	0.40%	116	12.90%	-2.10%	14	1.60%	-0.20%	12	1.30%	-0.90%
	55 to 64	876	57.00%	1.70%	54	6.20%	0.50%	156	17.80%	2.80%	8	0.90%	-0.90%	13	1.50%	-0.70%
	65 to 74	600	45.70%	-9.60%	37	6.20%	0.50%	155	25.80%	10.80%	16	2.70%	0.90%	36	6.00%	3.80%
	75 to 84	124	34.70%	-20.60%	10	8.10%	2.40%	39	31.50%	16.50%	2	1.60%	-0.20%	9	7.30%	5.10%
	85 or over	14	21.40%	-33.90%	6	42.90%	37.20%	2	14.30%	-0.70%	0	0.00%	-1.80%	2	14.30%	12.10%
Prefer not to say	161	39.80%	-15.50%	17	10.60%	4.90%	30	18.60%	3.60%	5	3.10%	1.30%	7	4.30%	2.10%	

Typically, our 'seldom heard' groups are aged under 25, males, of a non-white ethnic origin and from areas such as Gosport, Havant and Rushmoor – but this can be influenced by topic and comms channel

Number of responses tends to vary according to the topic of consultation

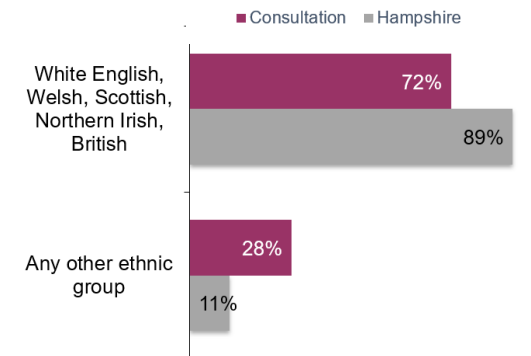


Ethnic category (Base: 1342, excludes responses that did not provide sufficient ethnicity data)



SP23 Budget consultation: 8% word of mouth awareness

Respondent ethnic profile vs Hampshire population (Base: 2626)



T21 Public health consultation: 21% word of mouth awareness

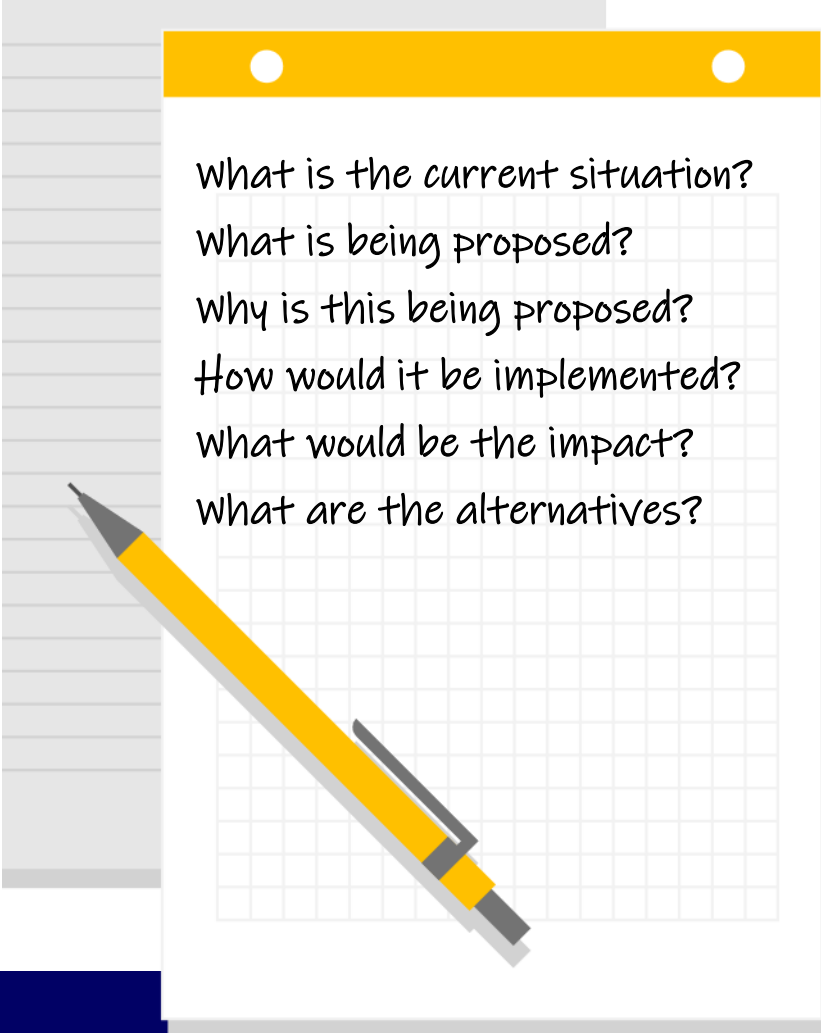
## Principle Four: We will consult using clear, simple information

---

We aim to:

- Provide sufficient information about the proposals and where appropriate their alternatives to allow residents to **make an informed response**
- Communicate in **plain English** and avoid jargon and acronyms
- Be clear about the **purpose of the consultation**, including the aspects of the decision which are open to change, and the decisions which have already been taken
- Be clear about the questions being asked but leave an **opportunity for further comment** where appropriate.

Page 34



What is the current situation?  
What is being proposed?  
Why is this being proposed?  
How would it be implemented?  
What would be the impact?  
What are the alternatives?

# Case study: The information tightrope

---

“Well done for creating such a comprehensive and easy-to-understand info pack!”

Page 35

Thank you for such detailed information enabling me to fully appreciate why you are making your dreadful choices.”

There should be sufficient information provided on the proposal to allow consultees to make an intelligent response. Unless consultees have some idea of the decision-maker’s rationale for the proposals to be put forward, or the main factors which are likely to be important in the decision-making process, it may be difficult for any effective response to be made.



“This consultation is far too lengthy for people to read and easily consider”

“Consultation is essential but this one is far too detailed!”

*Quotes illustrative of comments received to the T21 Libraries consultation which collected over 20,000 responses*

# Case study: Options for those who don't want to read the full pack or take a long survey



summaries, easy read information, consultation sites, video, audio and tailored response options

## About our Local Transport Plan

Page 36

Hampshire has the largest sub-regional economy in south England, is home to 1.3 million people and enjoys a natural environment. But to protect and enhance our way of life for generations to come, we need to adapt and plan ahead.

Transport is an absolutely fundamental aspect – it affects how we live, work and interact, how we experience places, how our businesses operate, and our health and wellbeing. Our Local Transport Plan must get it right.



## Take part in the consultation

- [Online Consultation Response Form](#)
- [Printable Consultation Response Form](#) PDF
- [Easy Read version – Information Pack](#) PDF
- [Online Easy Read version – Response Form](#)
- [Easy Read version – printable Response Form](#) PDF
- [Feedback Form - Young Person's version](#) PDF
- [Questions and Answers](#) PDF

Response form for parents, carers or support workers to capture young people's views via [video](#) or [audio](#) upload facility.

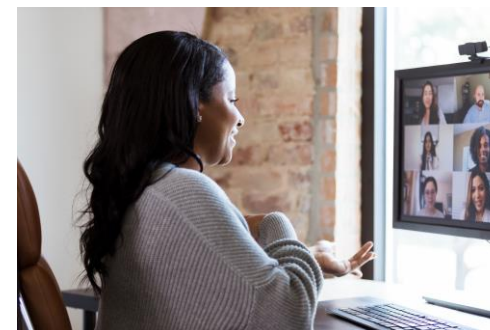


## Changes to Hampshire's Library Service Information Pack



## Consultation drop-in events for parents and carers

Area of County	Date and Time	Event type	Venue
Whiteley	Friday 13 March 9:30am to 11:30am	Hampshire Parent Carer Network (HPCN) meet-up	The Parson's Collar, Rookery Avenue, PO15 7AJ
Bishopstoke	Monday 16 March 8:00pm to 9:30pm	South Hants National Autistic Society meeting	Bishopstoke Evangelical Church, Stoke Park Road, SO50 6DA
Winchester	Wednesday 18 March 10:00am to 12:00pm	HPCN meet-up	River Park Leisure Centre, Gordon Road, SO23 7DD
Sway	Monday 23 March 10:00am to 11:30am	HPCN meet-up	Sway Parish Council, Jubilee Pavilion, Station Road, SO41 6BE
Alton	Wednesday 25 March 10:00am to 12:00pm	Drop-in	The King's Arms Alton, The Tannery, Vicarage Hill, GU34 1HT
Alresford	Friday 27 March 10:00am to 11:30am	HPCN meet-up	The Arlebury Café, The Avenue, SO24 9EP
Waterlooville	Tuesday 31 March 9:00am to 12:00pm	Drop-in	Riverside Community Special School, Scratchface Lane, Purbrook,

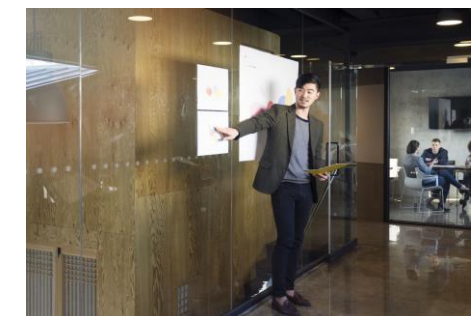


## This presentation will explain:

- Why Hampshire County Council is proposing changes to Home to School and Post-16 Transport
- What the changes are that the County Council is proposing
- How you can have your say on the proposed changes
- What will happen next



After this presentation we will respond to questions that have been submitted, and answer other questions that you may have

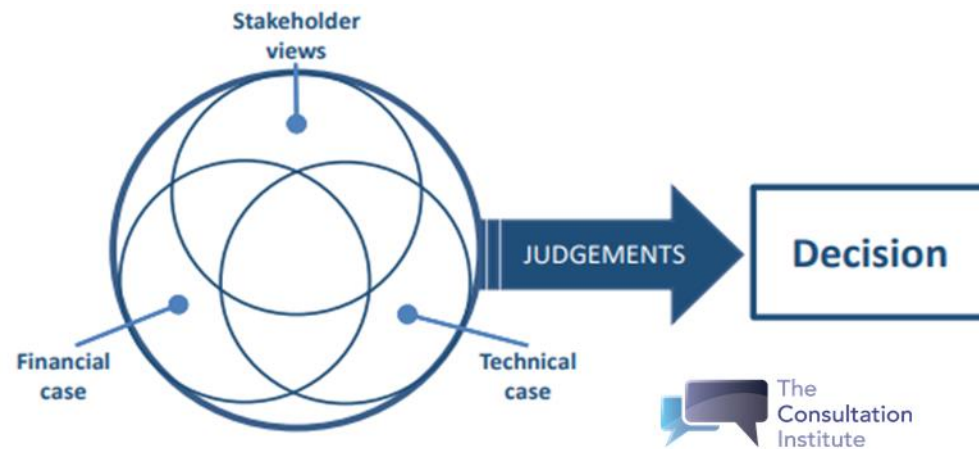


Virtual and in-person drop in events, face to face and telephone one to one's, virtual workshops, live Q&A sessions, local exhibitions

# Principle Five: We will ensure responses are taken into account when decisions are made

Although the proportion of respondents who agree or disagree with a proposal is an indicator of public opinion, the true value of consultation is in **understanding the potential impacts of the proposals** and **why people feel the way they do**. This can be used to guide adaptations, address misconceptions and deliver informed judgements.

Page 37



True consultation is not a matter of simply 'counting heads'; it is not a matter of how many people object to proposals but how soundly based their objections are...

Lady Justice Arden with LJ Richards and Sir Stephen Sedley in *The Royal Brompton Hospital v The Joint Committee of PCTs* (2012)



# Case study: Understanding equality impacts on people with protected characteristics

The Public Sector Equality Duty (PSED) requires public authorities to have due regard to equality considerations; specifically the need to:

- eliminate unlawful discrimination, harassment and victimisation.
- advance equality of opportunity between people who share a protected characteristic and those who do not.
- foster good relations between people who share a protected characteristic and those who do not.

By seeking views and developing our understanding, consultation can play a significant role in helping the County Council to assess the impact of proposals and decisions on equalities groups.

Page 38

## Section Six: About you

Please answer this section if you are **responding to this consultation as an individual**.

If you are providing the **official response of an organisation, group or business, or responding as a democratically Elected Representative of a constituency**, please go to the last page of this document without answering this section.

Hampshire County Council is committed to improving its services, eliminating unlawful discrimination and promoting equality of opportunity for all people. **The following questions are optional** but we would be grateful if you could answer to help us understand the views of, and potential impacts on, different types of people within Hampshire.

Please provide your postcode:

*Providing your postcode is optional. It would help us to understand the impact of proposed changes if you could provide at least the first five digits of your postcode. If you do provide your full postcode it is possible that in rural areas this might identify your property. By providing your postcode you are consenting to the County Council using this information to analyse the response to the consultation from different areas, to understand how views differ by area and to help model data for different types of respondent.*

What was your age on your last birthday? (Please choose one option)

- Under 16     16 to 24     25 to 34     35 to 44     45 to 54     55 to 64     65 to 74     75 to 84     85 or over     Prefer not to say

Which of the following best describes your gender? (Please choose one option)

- Female     Male     Prefer to self-describe     Prefer not to say

If you prefer to self-describe, please specify in the box below:

Are your day-to-day activities limited because of a health problem or disability lasted, or is expected to last at least 12 months? (Please choose one option)

- Yes, a little     Yes, a lot     No     Prefer not to say

## Section Four: Impacts

Please describe what, if any, impact the County Council's options for balancing its budget could have on you (or your constituency, organisation, group or business). Please summarise your comments in the box below. Please do not provide any personal details in your response.

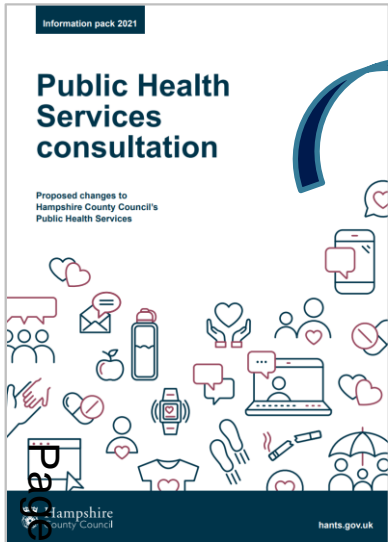
If you require any extra space for your response to this question, please write on an additional page and include it with this Response Form.

To help us better understand the impacts you are describing, and share this feedback with the relevant services at the County Council, please answer the following in relation to this feedback:

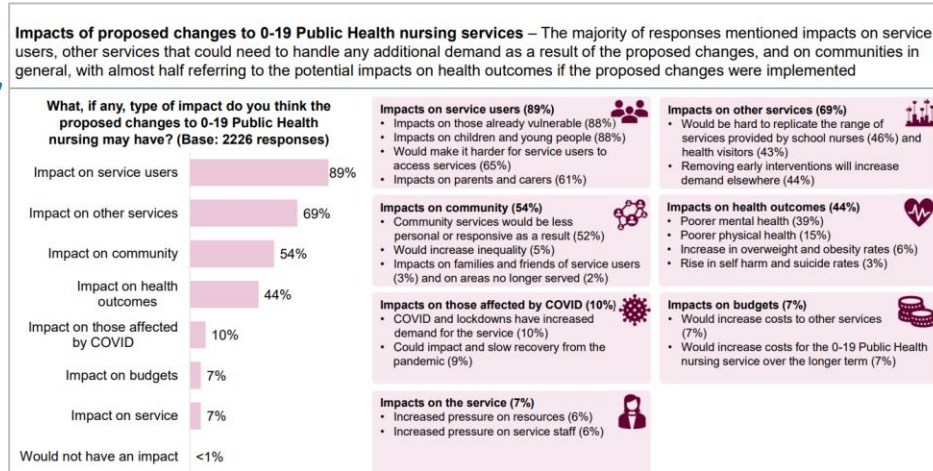
Please indicate below if the impacts you have mentioned above relate to any of the following characteristics or issues: (Please select all that apply)

- |  |   |   |
|--|---|---|
| <input type="checkbox"/> Age                               | <input type="checkbox"/> Pregnancy and/or maternity | <input type="checkbox"/> Poverty              |
| <input type="checkbox"/> Disability                        | <input type="checkbox"/> Race                       | <input type="checkbox"/> Rurality             |
| <input type="checkbox"/> Gender reassignment               | <input type="checkbox"/> Religion or belief         | <input type="checkbox"/> Environmental impact |
| <input type="checkbox"/> Marriage and/or civil partnership | <input type="checkbox"/> Sex                        | <input type="checkbox"/> Don't know           |
|  | <input type="checkbox"/> Sexual orientation         | <input type="checkbox"/> None of these        |

# Case study: How responses are taken into account



39



[Health and Adult Social Care Select Committee - Tuesday, 19th October, 2021 10.00 am, NEW](#)

Councillor Liz Fairhurst, Hampshire County Council's Executive Lead Member for Adult Services and Public Health said: "I would like to thank everyone who took part in the consultation. Their views, along with feedback from Public Health England (PHE) on use of Public Health ringfenced grant, means that the proposals originally shared with the public have been substantially altered including not pursuing Public Health School Nursing proposals. The [scrutiny committee](#) will now review the proposals in detail; then pass them to me, with any additional changes they may wish to recommend, for a final decision in November."

In total, it was anticipated that the County Council's Public Health function would need to contribute some £6.8million of savings in 2021/22 towards the Local Authority's overall budget shortfall. Just over £3.1million of savings have already been achieved through a combination of internal and external service transformation. Following feedback from the consultation and subsequent discussions, it has been concluded that no further savings towards the £6.8million target are required from Public Health. Rather, the remaining saving requirement of £3.7million can be achieved through additional savings made within adult social care, as a consequence of a reduction in client numbers experienced during COVID.

The funding from the £236,000 of savings proposed to proceed, will be reinvested back into areas of priority to help improve the public's health.

The public consultation ran over the summer. Some 3,000 responses were received from individuals, as well as various organisations, including Public Health England.

HCC Press release October 2021

**Impacts of proposed changes to the 0-19 Public Health nursing service** – Different respondent groups consistently reported impacts on service users, other services, and on communities frequently, with places of education and health sector organisations also demonstrating notable concerns about the impacts on health outcomes from the proposed changes

Shaded cells show the top three impacts described by this group	Base	Impact on service users	Impact on other services	Impact on community	Impact on health outcomes	Impact on those affected by COVID	Impact on budgets	Impact on service	Would not have an impact	Other
All responses	2226	89%	69%	54%	44%	10%	7%	7%	<1%	<1%
Current service user, or family of current service user	679	92%	76%	58%	46%	7%	4%	8%		
Non service users (or family of)	511	82%	60%	44%	35%	9%	8%	5%	1%	
Nursery, school, college or place of education	32*	100%	84%	44%	53%	13%	3%			
Health sector organisations	33*	91%	88%	76%	67%	15%	15%	6%	3%	
Employees of HCC or commissioned providers	550	91%	76%	59%	49%	13%	6%	11%	<1%	
Aged under 25	54	89%	72%	56%	41%	4%	4%	4%		
Has a long-standing illness, health problem, or disability	237	81%	56%	48%	36%	5%	8%	4%	<1%	
Has children or young people up to the age of 16 in household	1274	91%	69%	54%	44%	9%	6%	7%	<1%	
Ethnic Minority	113	79%	61%	49%	30%	7%	9%	6%	1%	
Household income up to £30,000 per year	246	87%	63%	50%	40%	6%	5%	8%	<1%	

## In summary

---

- Consultation enables the County Council to improve proposals and decisions by understanding and taking account of the views of stakeholders
  - There is a defined policy and process for consultation, which enables the County Council to work within legal requirements
  - The County Council will consult when there are proposals to remove, substantially change or reduce a service, or when there is a legitimate expectation that it will do so
- Page 40
- The needs of identified stakeholders are paramount in determining the scope of a consultation at all stages
- A process of ongoing review allows the County Council to identify and implement areas for improvement after each consultation
  - As community gatekeepers, Elected Members play an important role in helping constituents understand the importance of sharing their views



## HAMPSHIRE COUNTY COUNCIL

### Report

<b>Committee:</b>	Policy and Resources Select Committee
<b>Date:</b>	19 November 2021
<b>Title:</b>	Approval of Working Groups
<b>Report From:</b>	Chief Executive

**Contact name:** Louise Pickford, Democratic Services Officer

**Tel:** 0370 779 1898

**Email:** [louise.pickford@hants.gov.uk](mailto:louise.pickford@hants.gov.uk)

### Purpose of this Report

1. The purpose of this report is for the Policy & Resources Select Committee to fulfil its role of coordinating scrutiny. The Policy and Resources Select Committee is asked to approve the initiation of working groups and sub committees by the other Select Committees in accordance with Paragraph 1.1.Chapter 3 Part 3 of the County Council's Constitution.

### Recommendations

2. That the Policy and Resources Select Committee supports the proposed Income Generation Task and Finish Working Group to be undertaken by the Culture and Communities Select Committee.
3. That the Policy and Resources Select Committee supports the proposed Working Group on Adults' Health and Care SP23 Savings Programme Proposals to be undertaken by the Health and Adult Social Care Select Committee.

### Culture and Communities Select Committee Task and Finish Working Group: Income Generation

4. At the Culture and Communities Select Committee held on 20 September 2021, the Select Committee resolved to initiate a task and finish working group regarding Income Generation. This working group is being formed to examine income generation for those services within the Culture, Communities and Business Services Department, that lie within the remit of

the Culture and Communities Select Committee in the context of the SP23 programme.

### **Health and Adult Social Care Select Committee Working Group on Adults' Health and Care SP23 Savings Programme Proposals**

5. At the Health and Adult Social Care Select Committee meeting on 19 October 2021, the Select Committee resolved to initiate a Working Group on two aspects of the Adults' Health and Care 2023 Savings Programme; Local and County wide grants funded by Adult Social Care to voluntary, community and partner organisations in relation to Demand Management and Prevention, and Social Inclusion services which provide support for vulnerable people who are homeless or at risk of homelessness, to maintain independent accommodation. The Working Group is anticipated to start meeting in November 2021 with a view to concluding to feed into a decision by the Executive Member in June 2022.

### **Consultation and Equalities**

6. No consultation has been required.
7. An equalities impact assessment will be undertaken as required when any service changes are being proposed. This report is only regarding initiating a piece of review work and therefore is not proposing any changes, therefore no impact is expected as a result of this report.

### **Climate Change Impact Assessment**

8. Hampshire County Council utilises two decision-making tools to assess the carbon emissions and resilience impacts of its projects and decisions. These tools provide a clear, robust, and transparent way of assessing how projects, policies and initiatives contribute towards the County Council's climate change targets of being carbon neutral and resilient to the impacts of a 2°C temperature rise by 2050. This process ensures that climate change considerations are built into everything the Authority does.
9. **Climate Change Adaptation and Mitigation.**  
The carbon mitigation tool and climate change adaptation tools were not applicable on this occasion because the decision relates to a programme that is strategic/administrative in nature.



**REQUIRED CORPORATE AND LEGAL INFORMATION:**

**Links to the Strategic Plan**

<b>Hampshire maintains strong and sustainable economic growth and prosperity:</b>	no
<b>People in Hampshire live safe, healthy and independent lives:</b>	no
<b>People in Hampshire enjoy a rich and diverse environment:</b>	no
<b>People in Hampshire enjoy being part of strong, inclusive communities:</b>	no
<b>This proposal does not link to the Strategic Plan but, nevertheless, requires a decision because:</b>	
It is a requirement of the Constitution that the Policy & Resources Select Committee agrees the appointment of working groups for the other Select Committees.	

**Other Significant Links**

<b>Links to previous Member decisions:</b>	
<u>Title</u> Working Group Proposal	<u>Date</u> 19 October 2021
<b>Direct links to specific legislation or Government Directives</b>	
<u>Title</u>	<u>Date</u>

<b>Section 100 D - Local Government Act 1972 - background documents</b>	
The following documents discuss facts or matters on which this report, or an important part of it, is based and have been relied upon to a material extent in the preparation of this report. (NB: the list excludes published works and any documents which disclose exempt or confidential information as defined in the Act.)	
<u>Document</u>	<u>Location</u>
None	

## **EQUALITIES IMPACT ASSESSMENT:**

### **1. Equality Duty**

The County Council has a duty under Section 149 of the Equality Act 2010 ('the Act') to have due regard in the exercise of its functions to the need to:

- Eliminate discrimination, harassment and victimisation and any other conduct prohibited by or under the Act with regard to the protected characteristics as set out in section 4 of the Act (age, disability, gender reassignment, marriage and civil partnership, pregnancy and maternity, race, religion or belief, sex and sexual orientation);
- Advance equality of opportunity between persons who share a relevant protected characteristic within section 149(7) of the Act (age, disability, gender reassignment, pregnancy and maternity, race, religion or belief, sex and sexual orientation) and those who do not share it;
- Foster good relations between persons who share a relevant protected characteristic within section 149(7) of the Act (see above) and persons who do not share it.

Due regard in this context involves having due regard in particular to:

- The need to remove or minimise disadvantages suffered by persons sharing a relevant protected characteristic that are connected to that characteristic;
- Take steps to meet the needs of persons sharing a relevant protected characteristic that are different from the needs of persons who do not share it;
- Encourage persons sharing a relevant protected characteristic to participate in public life or in any other activity in which participation by such persons is disproportionately low.

### **2. Equalities Impact Assessment:**

An equalities impact assessment will be undertaken as required when any service changes are being proposed. This report is only regarding initiating a piece of review work and therefore is not proposing any changes, therefore no impact is expected as a result of this report.

This page is intentionally left blank

## HAMPSHIRE COUNTY COUNCIL

### Report

<b>Committee:</b>	Policy and Resources Select Committee
<b>Date:</b>	19 November 2021
<b>Title:</b>	Work Programme
<b>Report From:</b>	Chief Executive

**Contact name:** Louise Pickford, Democratic and Members Services

**Tel:** 0370 779 1898

**Email:** Louise.pickford@hants.gov.uk

#### **Purpose of the Report**

1. To review and agree the Work Programme for the Policy and Resources Select Committee.

#### **Recommendation**

2. That the Committee agrees the Work Programme as attached and makes any amendments as necessary.

**REQUIRED CORPORATE OR LEGAL INFORMATION:**

**Links to the Strategic Plan**

<b>Hampshire maintains strong and sustainable economic growth and prosperity:</b>	yes
<b>People in Hampshire live safe, healthy and independent lives:</b>	yes
<b>People in Hampshire enjoy a rich and diverse environment:</b>	yes
<b>People in Hampshire enjoy being part of strong, inclusive communities:</b>	Yes

**Section 100 D - Local Government Act 1972 - background documents**

The following documents discuss facts or matters on which this report, or an important part of it, is based and have been relied upon to a material extent in the preparation of this report. (NB: the list excludes published works and any documents which disclose exempt or confidential information as defined in the Act.)

Document

Location

None



## **EQUALITIES IMPACT ASSESSMENT:**

### **1. Equality Duty**

The County Council has a duty under Section 149 of the Equality Act 2010 ('the Act') to have due regard in the exercise of its functions to the need to:

- Eliminate discrimination, harassment and victimisation and any other conduct prohibited by or under the Act with regard to the protected characteristics as set out in section 4 of the Act (age, disability, gender reassignment, marriage and civil partnership, pregnancy and maternity, race, religion or belief, sex and sexual orientation);
- Advance equality of opportunity between persons who share a relevant protected characteristic within section 149(7) of the Act (age, disability, gender reassignment, pregnancy and maternity, race, religion or belief, sex and sexual orientation) and those who do not share it;
- Foster good relations between persons who share a relevant protected characteristic within section 149(7) of the Act (see above) and persons who do not share it.

Due regard in this context involves having due regard in particular to:

- The need to remove or minimise disadvantages suffered by persons sharing a relevant protected characteristic that are connected to that characteristic;
- Take steps to meet the needs of persons sharing a relevant protected characteristic that are different from the needs of persons who do not share it;
- Encourage persons sharing a relevant protected characteristic to participate in public life or in any other activity in which participation by such persons is disproportionately low.

### **2. Equalities Impact Assessment:**

This is a scrutiny review document setting out the work programme of the Committee. It does not therefore make any proposals which will impact on groups with protected characteristics.

### **3. Climate Change Impact Assessment:**

This is a scrutiny review document setting out the work programme of the Committee. It does therefore not make any proposals which will impact on climate change.

**WORK PROGRAMME – POLICY & RESOURCES SELECT COMMITTEE**

<b>Topic</b>	<b>Issue</b>	<b>Reason for inclusion</b>	<b>Status and Outcomes</b>	<b>19 Nov 2021</b>	<b>21 Jan 2022</b>	<b>3 Mar 2022</b>
<b>Pre-scrutiny</b>	Savings Programme 2023 – Revenue Savings Proposals		To include: Corporate Services Emergency Planning Property Health and Safety			
<b>Pre-scrutiny</b>	2021/22 Revenue Budget for Corporate Services	To pre-scrutinise the budget proposals for the Revenue budget for Corporate Services, prior to approval by the Executive Member for Policy and Resources	Budget considered annually in January.		<b>X</b>	
<b>Pre-scrutiny</b>	2021/2022 Revenue and Capital budgets (CCBS)	To pre-scrutinise the Revenue and Capital budgets for the CCBS Dept, prior to approval by the Executive Member for Commercial Strategy, Estates and Property	Budget considered annually in January		<b>X</b>	
<b>Budget Monitoring</b>		(a) End of Year Financial Report	(a) Last considered June 2019			

Topic	Issue	Reason for inclusion	Status and Outcomes	19 Nov 2021	21 Jan 2022	3 Mar 2022
		<p>considered at summer meeting, to see how the budget was managed for the year compared to plan.</p> <p>(b) Medium Term Financial Strategy – considered when appropriate to provide longer term financial context</p>	(b) MTFS last considered Sept 2020.			
<b>For approval</b>	Approval for Culture and Communities Select Committee to initiate a Working Group on income generation	The setting up of working groups requires the approval of the P&R Select Committee		<b>X</b>		
<b>For approval</b>	Approval for HASC to initiate Working Group on SP23 Savings Programme Proposals	The setting up of working groups requires the approval of the P&R Select Committee		<b>x</b>		

Topic	Issue	Reason for inclusion	Status and Outcomes	19 Nov 2021	21 Jan 2022	3 Mar 2022
<b>Overview</b>	Covid-19 Financial Update	For the Committee to receive an update regarding the financial impact of the Covid-19 crisis.	presented at the June 2020 mtg Retain for future update			
<b>Overview</b>	Serving Hampshire - Performance	To monitor how performance is managed corporately and consider the performance information to support identification of areas to focus scrutiny.	Members requested to consider the performance report annually. Last received June 2021, next update expected summer 2022.  Mid-year update due Jan 2022.		X	
<b>Overview (Annual Item)</b>	IT developments and issues (including Digital Strategy)	Monitoring contribution of IT to change programmes, major projects (e.g. rural broadband) and policy issues in relation to underpinning council services (e.g. disaster recovery plans)	Update considered annually at January mtg.		X	
<b>Crime &amp; Disorder (Annual Item)</b>	Duty to review, scrutinise, and report on the	This duty passed from the Safe & Healthy People Select	Annual update on work of Hampshire Community Safety Strategy Group <b>plus particular</b>	X		

Topic	Issue	Reason for inclusion	Status and Outcomes	19 Nov 2021	21 Jan 2022	3 Mar 2022
for Nov mtg)	decisions made, and actions taken by 'responsible authorities' under the Crime and Disorder Act.	Committee to this committee in May 2014	<b>focus topic:</b> Child Exploitation - Nov 2018 Reducing Serious Violence - Nov 2019 County Lines – Nov 2021			
<b>Collation of Annual Report of Select Committees activity (Annual Item)</b>	To support oversight of the scrutiny function, and the role of this committee to ensure scrutiny activity is having impact and being evaluated.	The Constitution requires that this committee report to Full Council annually providing a summary of the activity of the select committees	Annual report to this meeting in June and submitted to Full Council in July			
<b>Overview</b>	Hampshire County Council's approach to consultation and engagement	Requested by the Committee at its mtg in June 2021	To receive a presentation	<b>X</b>		
Overview	Gigabit Broadband Voucher scheme	Requested by the Committee at is Sept 21 mtg	To receive an update on the scheme			X

Topic	Issue	Reason for inclusion	Status and Outcomes	19 Nov 2021	21 Jan 2022	3 Mar 2022
<b>Overview</b>	Climate Change Strategy	**only in respect of resources in the context of budget provision				
<b>Overview</b>	Local Enterprise Partnerships	Requested by Chairman	Introductory presentation Nov 2018. Chief Executive of both LEPs gave a presentation to Nov 2020 meeting.  Retain for future meeting.			